



**Pioche
Walking and
Driving Tour**
Page 4



**\$50,000
Fishing
Tournament**
Page 7



**State Parks
of Lincoln
County**
Page 8



**Dougherty's
Fine Jewelry
Opens**
Page 15

TREASURE HILL CHRONICLES

Spring, 2010

PIOCHE THEN AND NOW

A SLIGHTLY TWISTED TOUR OF PIOCHE'S INFAMOUS MILLION DOLLAR COURT HOUSE

By Jim Kelly

Lincoln County and specifically, Pioche, has the dubious honor of having one of the least known, yet costliest, monuments to greed, graft, and corruption, the Wild West has ever seen.

I'm a newcomer to the quiet little town of Pioche; I've only lived here permanently for about 10 years now. I was born in Las Vegas, and my father was born in Las Vegas. My paternal grandfather emigrated from Ireland to Las Vegas in 1910 or 1911. Shortly after his arrival he met, courted and married Martha Lynch, who was born here in Pioche, as was her father John H. Lynch. Martha's grandfather was born in Ely, Nevada and came to Pioche in the 1860's during the great silver mining boom.

But this story, missive, article, tale isn't supposed to be about me, it's about one of Lincoln County and Pioche's greatest historical treasures... "THE MILLION DOLLAR COURT HOUSE" and the free guided tours available from the middle of April through the middle of October.

This will be the third season that I have had the pleasure to work as a tour guide/interpreter. I have always been a bit of a history buff, and having direct family ties to the area has fueled my curiosity about the early days of Pioche. So many people have come in asking questions that I didn't know the answer to and my reply often is, "I don't know. Let's find out!" (As any good teacher will tell you over and over, "You don't have to know everything, but you better know where to look it up.")

Or more likely, to quote Mark Twain, "Never let the truth get in the way of a good story," I make something up on the spot. After all when you're embellishing about the 1800s, who can refute?

The story of the "MILLION DOLLAR

COURT HOUSE" opens with how and why it cost so much. The two main reasons you could've read in this morning's newspaper are CORRUPT POLITICIANS and GREEDY BANKS. It was originally contracted to be built at cost of \$26,400. But due to design changes, over runs, and many pockets being lined, it came to \$88,000. So they decided to sell bonds to raise the required monies, and, as you can imagine, very little, if any, went toward repaying this debt. By the time the bonds were at three times the original value in 1907, the cost had soared to whopping \$435,000. It took another 30 years to pay off the note, with the usual interest rates of over 25%. The courthouse was finally paid off in 1937 at a total cost exceeding \$900,000. Of course, by that time it had been condemned for some years and a new county court house had to be built.

The first stop on the tour is the sheriff's office, and waiting in an old captains chair is the legendary Jake Johnson. He was known as a 'fair but firm' law officer, who enforced the law with a great deal of vigor. He served as the sheriff of Lincoln County for many years around the turn of the last century. In this office are the original hand written records, logs and ledgers, including everyone who was ever arrested and spent time in the county jail from 1873 until 1969. Even though the courthouse was condemned and replaced in the late 1930s, the jail was used up to New Years Eve 1969. The jail is upstairs and is the grand finale of the tour. All of us kids love the old jail. Some call it barbaric, others say it's downright medieval; I say it's really creepy! In the late 1860s and early 1870s the sheriff's 'take home' pay was in excess of \$40,000 per year! Ulysses S. Grant's salary was \$36,000.

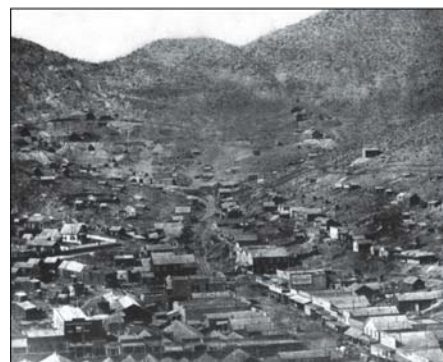
Court House continued on Page 14



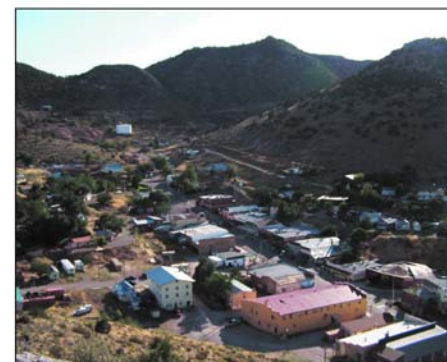
Looking down on Pioche from Treasure Hill.

Welcome TO OUR TOWN

Before you set out to explore the town and its surroundings, please take a few minutes to browse through this informative little paper. You will find a tour of the uptown historic district, a brief overview of life in a boom town mining camp miles from mainstream America that is in stark contrast to the present day village. We are surrounded with what is probably our biggest asset, the natural World of the high desert of southeastern Nevada. You will find a description of our state parks, nearly endless public lands, the wildlife viewing, hunting and fishing possibilities. For those that want to stay a while, our businesses are advertising their services and for those that might be tempted to permanently join us for a more laid back lifestyle, we have included a relocation section with a listing of community services, fees, etc. Lastly, we have included a bibliography for further reading and internet browsing.



Pioche in 1870 before the big fire



Pioche in 2009 taken from Lime Hill

PIOCHE'S 'DINKY'

By Leo Schafer

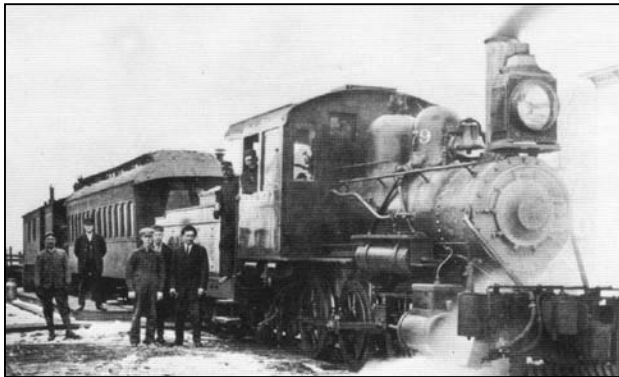
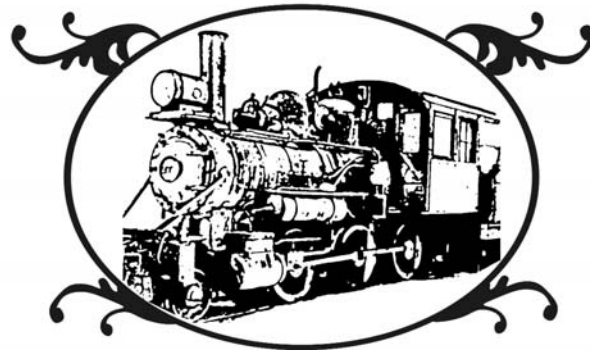
There is a locomotive that rests in the park next to the Lincoln County Courthouse. The number of the engine is 279. On the side of the cab the letters C. & N. W. R. are painted. What do those letters stand for? The 'R' would most likely be Railroad, but C. & N. W. is not as obvious. Maybe it means Can't and Never Would. No, this little engine could and it did. Let's start at the beginning.

This locomotive was constructed in 1912 at the Schenectady, New York works of the American Locomotive Company. It was built as a three-foot gauge Mogul, which is the name of a locomotive with a certain wheel configuration. The six large driving wheels that propel the engine and support the locomotive's main weight are 43 inches in diameter. This locomotive with tender weighed over 50 tons when it was fully operational. On each side of the locomotive the steam cylinder is connected directly to the driving wheels. The cylinders are 11 x 18 inches, and are located between the pilot (front) and driver wheels. This locomotive has a further classification, D11, which describes its operating features.

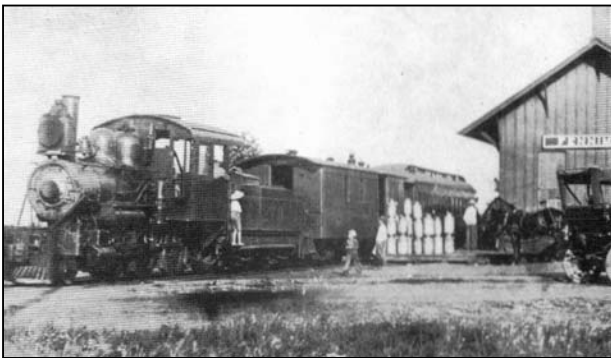
The photo below is how number 279 looked when it was built at the Schenectady works in 1912. As can be seen it carried the number 279 and the C. & N. W. R. logo, and directly below the logo is the classification D11.



After it departed Schenectady the 279 was shipped to the Midwest. It ran on a short line that connected Fennimore and Woodman, Wisconsin, and was less than 20 miles in length. The railroad was owned by the Chicago and Northwestern Railroad (C. & N. W. R.) hence we understand the logo on the cab. The road was nicknamed the "Dinky." It ran primarily a roundtrip passenger service between the two towns. In those days, and especially in Wisconsin, the passenger train was also a milk train gathering fully loaded milk cans in the morning and returning empty cans later in the day. Frequent stops were made at platforms where the cans were transferred. A freight run was scheduled as needed. The 279 was in service there until 1926 when the Dinky line closed.



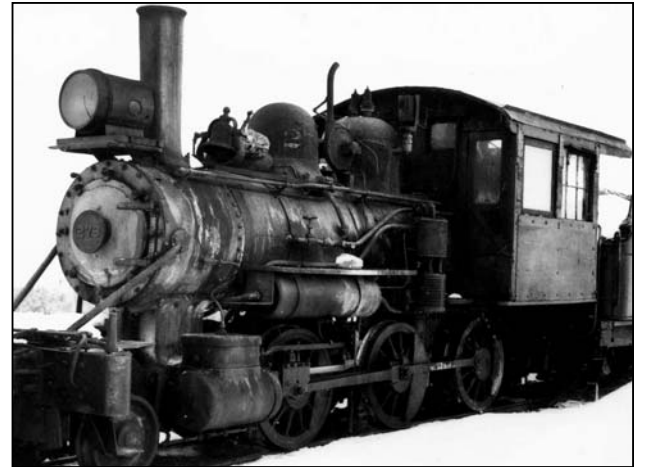
The photo above is number 279 as it appeared new in Woodman, Wisconsin. The photo below was taken at Fennimore, Wisconsin. Note the empty milk cans stacked and ready to be loaded onto the train.



After that line closed, the Dinky engine number 279 was transported to Pioche by rail. Dinky's new home was the Pioche Pacific Railroad ("The Jackrabbit Road") that ran northwest from Pioche. Dinky arrived just in time too, for the mines north of Pioche were in heavy production. In fact, the Bristol Silver Mines Company was the largest producing lead mine in Nevada at that time. The Bristol Mine had a tram connecting it to the town of Jackrabbit, formerly Royal City, on the other side of the

mountain. A saloon in Royal City was the location where Nevada outlaw Hank Parish murdered his last victim and was later hanged for the crime in Ely, Nevada.

The lead ore was loaded at Jackrabbit onto the Pioche Pacific Railroad for a 15 mile run southeast to Pioche where it connected with the Union Pacific Railroad's network and was further transported to Utah. The Jackrabbit Road had a footprint that was in the shape of a 'Y.' One side of the Y was the route to Jackrabbit; the second was a two mile leg called the Hill Line, connecting the mines at Panaca Flat on Treasure Hill. The third side was just down the hill from Pioche where it connected to the Union Pacific terminus. Many of these mines on Panaca Flat are still easily visible by looking up the canyon from Pioche.



Dinky operating on the Jackrabbit Road

Dinky was retired and was housed in Jackrabbit in 1939. In 1948, the Jackrabbit Road was closed. After World War II, the production from the Bristol mines diminished to a point where trucking was more economical than rail transportation. Dinky remained in Jackrabbit until 1957; it was then moved to Pioche where it resides today. Stop by and see this workhorse of an era past. It's free to view and very easy to find. It's in the park next to the courthouse about one half mile down the hill from the Overland Hotel and Saloon on Main Street.

As noted earlier, the C. & N. W. R. logo appears on the side of the cab. When it left the factory, and when it left Wisconsin, directly below the logo was the classification D11. At some point it was repainted and the D11 was changed to D. U. as is visible now. Was this just a misinterpretation of the original nomenclature? Or, perhaps it simply denotes the engine's current status: Dinky Uncoupled.

Dinky will soon be reaching its 100th birthday.

Photo credits: Schenectady Works courtesy of Alco Historic Photos (with their express permission). Dinky on the Jackrabbit Road, author's collection. Other photos courtesy of Fennimore Railroad Historical Society (with their express permission) and appreciation to Gregg Condon and Robert Felten of that society.

Lincoln County Telephone
System, Inc.



LCTS

747 Main Street - P. O. Box 150
Pioche, NV 89043

For all your communication needs
www.lctsys.com

775-962-5131
800-340-4131
Inside LC County Dial 611

TREASURE HILL CHRONICLES

Published Quarterly and distributed throughout Lincoln County

Published by: Pioche Chamber of Commerce
P. O. Box 127
Pioche, NV 89043
775-962-5544 www.piochenevada.com

We are indebted to our advertisers, Nevada Commission on Tourism, and the Lincoln County Room Tax Board who make this publication possible. Please let our advertisers know how much you enjoy reading "Treasure Hill Chronicles" and help them by patronizing their businesses.



Thompson's Opera House is available for rent for private or commercial use.

GRAND OPERA

THOMPSON'S OPERA HOUSE NOW AVAILABLE FOR RENT

The Opera House built in 1873, and originally known as Browns Theater, has been a central gathering place for the residents of Pioche, Nevada from the time it was built.

Closing in the 1940's, it has now reopened in 2009 after a major renovation by Lincoln County. The "Thompson's" has enjoyed use as a dramatic theater, musical hall, dance hall and movie theater over the years, and is now available for rent by public and private parties. It is a perfect venue for events such as weddings, business meetings, small conferences and entertainment.

To reserve Thompson's Opera House in historic Pioche, Nevada, please call Leslie Derkovitz at 775-962-5426 or Cory Lytle at 775-962-5165.

Rate schedule —

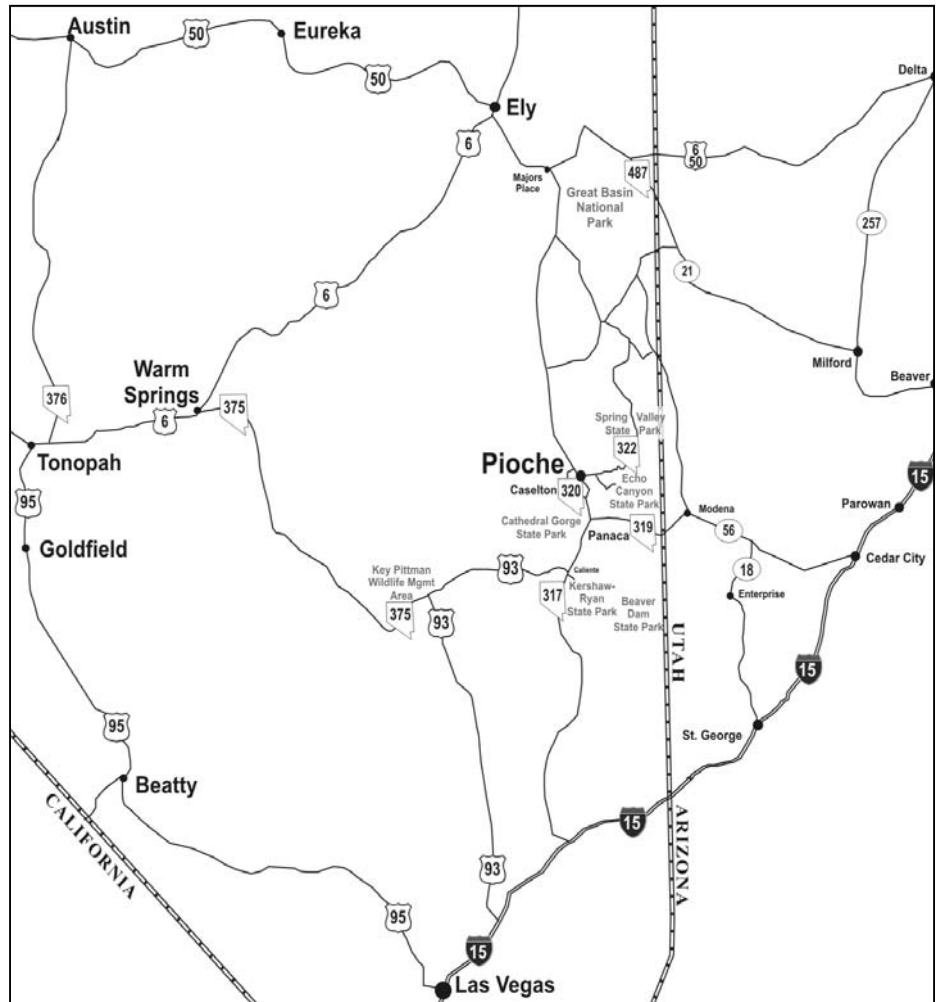
Private use (receptions, gatherings, parties)
\$100 per event not exceeding 72 hrs.
\$50 per day not exceeding 24 hrs.

Commercial use (shows, equipment contracts, entertainment)
\$125 per event not exceeding 72 hrs.
\$75 per day not exceeding 24 hrs.

Non -Profit use (governmental entity)
\$25 per event not exceeding 72 hrs.

***\$100.00 refundable security deposit required by separate check.
 ***Private "event insurance" required

WHERE IS PIOCHE?



REALTY ONE GROUP

A Team of Professionals

Janet L. Leedham, CRS
Certified Residential Specialist

Cel: (702) 219-1990
 Dir: (702) 645-2897
 Fax: (702) 655-9200
 JLeedham@RealtyOneLV.com

1333 N. Buffalo Dr.
 Suite 190
 Las Vegas, NV 89128
 RealtyOneLV.com

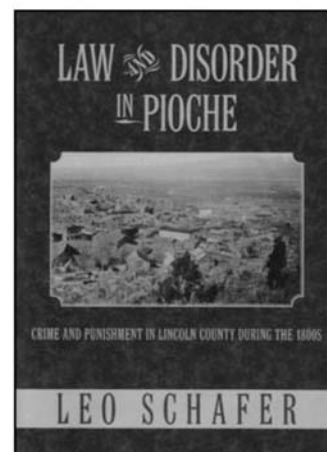
Lincoln County Specialist

This new volume now available at the following locations:

- A & B Service
- Cathedral Gorge State Park Visitors Center
- Miner's Market
- Overland Hotel & Saloon
- Peggy's Gifts
- Pioche Museum
- The Rag Doll
- Silver Café & Silver Mine Gifts

For the trifling sum of \$13.00 per copy

Published by Book Connection LLC



3R GROOMING

Sandra Robinson, Owner

43 Years of Experience

10 Free Street
 Pioche, NV 89043

775-962-5317



Pamper Your Pet

PIOCHE, NEVADA

WALKING TOUR



"Old Million Dollar Court House"
Pioche, Nevada

1. The Million Dollar Courthouse

The Million Dollar Courthouse was designed by Edward Donahue and was built in 1871. It is constructed of brick and stone and borders on the "Classic Revival" style of architecture with its detailing and proportion. The Courthouse originally cost \$16,400, and the jail an additional \$10,000, for a total of \$26,400. Due to "cost over-runs" at the beginning of the project by politicians, and delayed payments with mounting interest, the price soon ballooned to nearly 1 million dollars (\$800,000) by 1936 when it was finally paid off.

2. McCannon/Cedar Streets

McCannon/Cedar Streets are where the first prominent families built prestigious homes, some of which are still in use today. Several of the homes were built by mining bosses, while others were occupied by doctors and lawyers. These streets were considered to be the fashionable place to live in early day Pioche.

3. The Miner's Union Hall

The Miner's Union Hall is presently the Episcopal Church. It is a 3-story wood framed structure with a gable roof. This building was built to fit into the landscape and is a typical example of "Plain Early" 20th Century style. The Miners Union was a center of social activities in this community for nearly 50 years.

4. Meadow Valley Street

Meadow Valley Street was the original entry street from Meadow Valley to the south of Pioche's business district. Many of the miners' cabins were located on the southeast end, and businesses flourished on the northwest end. It was one of the main business streets with the Catholic Church, Hanley's Opera House, 2 livery stables, blacksmith's shop, bakery, and dentist office being some of the first businesses located here. A few of these buildings were moved to Delamar in 1894 when that town started booming.



5. Main Street

Main Street runs from the famous Treasure Hill to the current Lincoln County Courthouse. From the days of mud and ruts to its present day concrete walks and asphalt paving, there have been thousands of exciting, tragic, happy, and wonderful events that have occurred along this Main Street. People from all over the world have traversed this small area and were charmed by its charisma. Some have stayed. Many have returned again and again. With its gun fights and killings, Pioche became known as the rough-

est, toughest mining camp in the West. Most of this happened on Main Street.

6. The Lincoln County Museum

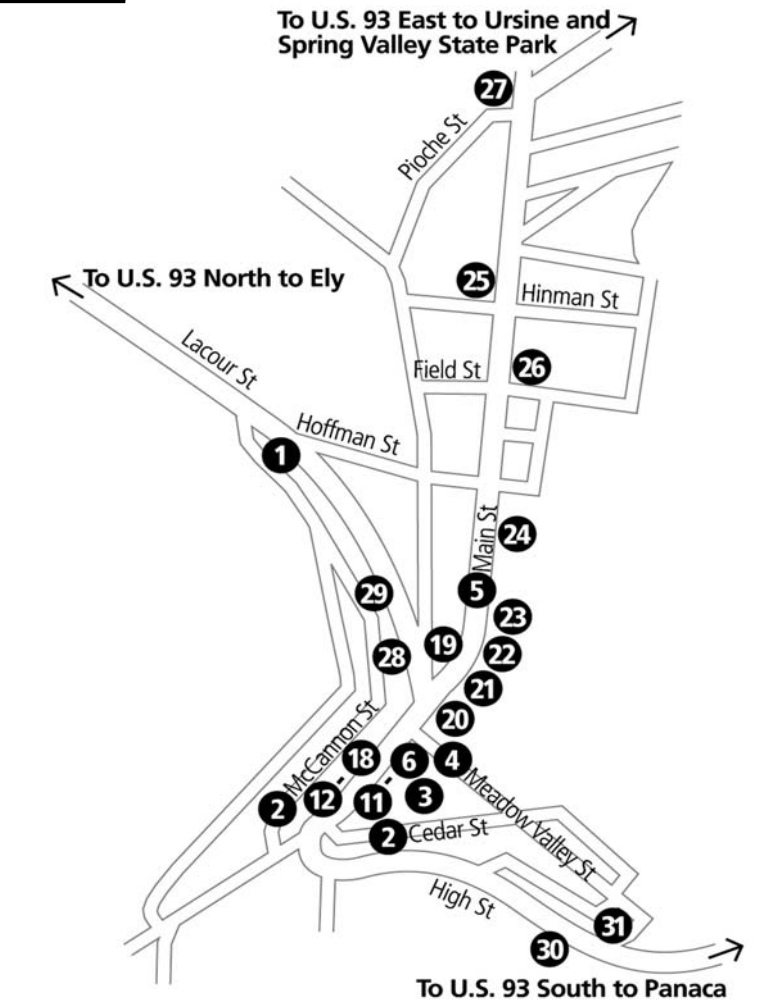
The Lincoln County Museum is housed in the building built by A. S. Thompson around 1900. A victim of a fire, it was rebuilt once, then later remodeled in 1929 to make it more modern. Upon the death of Charles Thompson, Sr., the building was sold to James Gottfredson, Sr. and he operated a mercantile and clothing store for a time. Later, the store was closed and the Gottfredson family donated the building to Lincoln County in 1962, to become a museum. Over the years, it has evolved into one of the best museums of its kind in the state of Nevada.

7. The Pioche Odd Fellows Lodge

The Pioche Odd Fellows Lodge was built in 1872 and was originally J. J. Halpin's Hardware Store before he moved his business to Silver Reef, Utah. It has been used for many lodge functions, community dances, parties and social gatherings.

8. The Nevada Club

The Nevada Club generally dates back to the early 1900s. It is on the site of the original Pioche assay office that had been destroyed by a fire. The present structure is constructed of brick, concrete and stone to reduce the fire hazard potential.



9. The Pioche Hotel

The Pioche Hotel dates from the turn of the century. The hotel was operated by Virginia Cottino and family until the mid-1950s. It is now a private residence.



10. The Commerce Cottage

The Commerce Cottage was one

of several lending libraries in Pioche that was operated by commercial establishments in the late 1800s. In 1940, the Lincoln County Library system was started with the purchase of this building which had been a jewelry store. It served as a library for 10 years. After a number of years of neglect, this building was refurbished in 1984 to become the Pioche Chamber of Commerce "Commerce Cottage" and Information Center.

11. The Pioche Record

The Pioche Record is the second oldest continuously printed weekly newspaper in the state, which was started in May 1870. Through the years it has changed owners and editors many times. The newspaper office was located for many years in the current Peggy's Store at 768

A & B

SERVICE

Mike Phillips, Owner

24 HR. Wrecker Service

- Gasoline
- Oil & Lube Jobs
- Diesel
- Tune-Ups
- Tires
- Brakes & Shocks


346 LaCour Street
Pioche, NV 89043

Serving Pioche since 1944

775-962-5822

Vaughn Phillips, Owner

Curt Phillips



Licensed Contractor

153 Lilith Street
Pioche, NV 89043

775.962.5230

Main Street, a building that appears to date from the early 1900s. The Pioche Record is now known as the Lincoln County Record and is headquartered at 195 Clover Street in Caliente. Two of its most notable editors have been E. L. Nores, who bought the paper about 1920 and ran it for many years; and Thos. L. Clay, a retired attorney, who bought it about 1970 and ran it until his death in 1979. More recently, Connie Simkins was the editor for 28 years, from 1979 to 2007. The current Editor/Publisher is Raymond Thompson.

12. The Stockum House

The Stockum House is one of the rare survivors of age and fire in this part of Main Street. It was built in 1866 and has been used as a residence, boarding house, hotel, church and once housed the Francois L.A. Pioche Art Gallery. It is presently a photography portrait studio.



13. Pioche's First U.S. Post Office and Western Union Office

Pioche's first U.S. Post Office and Western Union Office building was constructed in 1864 of stone to resist fire. The post office was established on August 17, 1870. Western Union service commenced in 1873. The front was later remodeled and modernized several times, but in 1985 the owners, the John Christian family, had the front rebuilt to its original design. Over the years, it has served as a cafe and has housed many other businesses. It is presently used by Rainbow Cable and Cell Phone Sales, a division of the Lincoln County Telephone System network of services.

14. The Alamo Club

The Alamo Club was originally built in the mid 1800s and was The Pioche Bank. It is noted for the large bank vault in the rear of the building. Throughout the years this business has hosted many notables and derelicts alike. Ernie Ferri operated the Alamo Club bar and gambling business for about 30 years, and

upon his death, his wife Lena continued to run the business. The Ferris owned the oldest continuous gaming and liquor license in the state of Nevada for many years until the 1988 sale. The current owner, Jim Marsh, renamed the bar to "The Bank Club."

15. Stever's Store and Beauty Shop

Stever's Store and Beauty Shop, originally built in the late 1860s, was partially burned and then rebuilt several times. It served as Stever's Apparel Store and The Garden Bar from the 1934 until 1997, when the Stever family sold the business. It has gone through several hands since, and the current owner is the Southern Nevada Water Authority.

16. The Pioche News Stand

The Pioche News Stand was originally built in the 1860s, and was partially burned then rebuilt in the early 1870s and in 1919. The false front "Pioneer" style and treatment of the fake brick tin appears to date from the early 1900s. The first telephone system was operated from this building and was owned by J.W. Christian. For many years, part of this building was used as the Pioche Post Office. The Rag Doll gift shop now occupies this area. The News Stand and Phone Company area is now used as storage by the owners, the Christian family.

17. The Pioche Mercantile

The Pioche Mercantile was originally known as Hodges & Cook Mercantile. The Christian Brothers, Edwin and Lloyd, operated the store for about 40 years, following the death of their father in about 1925. For years they handled groceries and would order any amount of needed mail order supplies that you would want. The business was acquired from Edwin Christian by Jerome and Tom Sears, descendants of J. L. Sears, a telegrapher that came to Pioche around 1873 from New York. Tom sold the business in 2001. Ted Daskas is the present owner, and it is now a second-hand store.

18. The Bank Club Building

In the Bank Club Building, former businesses Lincoln County Market and Treasure Chest had weathered the storms of Main Street, including fires and the mining boom and bust cycles. Many businesses have come and gone in these buildings. John Valenti operated the Bank Club bar and cafe for many years and in 1996, it was remodeled into the Grubsteak Dinner House, which closed in 2001. It is now Grub Pub and Deli. Next door is the new Dougherty's Fine Jewelry shop that opened in 2009. It was previously a deli. The Lincoln County Market housed the Navajo Bar before being converted into the Stop and Shop grocery market, which closed in 2002. That site is being offered for sale. The antique store was first Welland's Mercantile, then Gotfredson's Dry Goods, followed by Cowley's Drug Store and later, the Baptist Church-Treasure Chest. Corbett's Antiques opened in 1993 but has been closed the past few years. New owners expect to reopen in May 2010.

18 A. Historic Silver Café

Historic Silver Café, located north of the antique store in number 18, has been in business for 102 years under several owners. It is one of the oldest continuously operated businesses in the state. Sisters Judy Kwiatkowski and Julie White have owned and operated the restaurant for the past three years. They expanded last year with the opening of the adjacent Silver Mine Gift Shop.



18 B. Miner's Market

Miner's Market is located north of Silver Cafe, on the corner of Main St. and LaCour St. Owners Orlando and Debbie Sandoval opened the market in 2008. The town had been without a grocery store since the closing of the last one in 2002. In earlier days, the building was the site of Amsden Garage, Foglianos' car dealership, Orr's garage for almost 30 years, and Alfano Brothers' The Workshop (custom woodwork).

19. The Commercial Club/Amsden Buildings

The Commercial Club/Amsden Buildings, built about 1865, are located at the junction of Main and LaCour streets and were once the hub of community activity. Pioche's old Fire House is adjacent to the Amsden building, and it served for nearly 40 years as the fire house and apartment for the fire chief. Attorney A. L. Scott owned the Commercial Club Building for about 50 years beginning around 1916. He conducted his law practice on the first floor and lived in the basement area.

20. The Leader Store Building

The Leader Store building is the impressive building on the northeast corner of Meadow Valley and Main Street. It was owned for many years by the Ben Cohen family and operated as a dry goods store. It now houses a used merchandise business.

Walking Tour continued on Page 6



BIG FISH BOAT RENTAL & FIREWOOD CO

15059 SR 322 Highway - Pioche, NV 89043

Firewood Bags & Cords

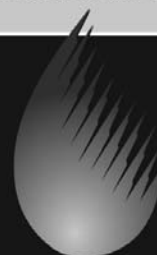
Pontoons & Fishing Boats

Located across from Eagle Valley

www.bigfishboatrental.com
bigfishboats@yahoo.com (email)

775-962-1405 or 775-962-1257

PREPARING FOR A SUSTAINABLE NEVADA



Southern Nevada
Water Authority

FOR MORE INFORMATION

702-258-3930

Toll Free 1-866-300-5600

www.snwa.com

Walking Tour, Continued from page 5

Next door is a massive stone building once used as a bar, the Allen's Cash Store, and a warehouse for the Leader Store business.

**21. The Overland Bar and Hotel Building**

The Overland Bar and Hotel building was constructed in 1940 by Bob Free. It has been burned and rebuilt several times over its colorful past. It originally had a bowling alley in the basement, and the west half was rented to the Allen's Cash Store for more than 30 years. This part is now a dance hall, with an antiques shop up front. Candace and Ron Mortenson have owned the Overland since 1995.

22. The Brown/Thompson Opera House

The Brown/Thompson's Opera House has survived from its 1873 construction date and was recently extensively renovated. It is entire-

ly constructed of wood and has a classic revival style combined with an early pioneer board construction. It was built by Aleck Brown in March of 1873 and renamed the Thompson's Opera House in April of 1892. It was later used as a movie theatre. The Opera House is currently owned by Lincoln County and will be used for public meetings and can be rented for private use. After the new movie house was built, the Gem Theater, the Opera House was used for weekly dances for many years. The Gem Theater showed movies until 2003, when high winds blew the roof off. The roof was repaired, but the owners decided not to reopen because it was more of a community service than a viable business.

23. The Orr Garage

The Orr Garage was built in the early 1870s and was constructed of stone. Its original use may have been as a blacksmith shop or harness shop. In later years, from about 1915, it was used as an auto repair garage.

**24. Pioche School**

Pioche School was built in 1909 in a "Mission" style of architecture. This was the oldest

continuously used school building in the state of Nevada in 1999 when it was abandoned for a new building, built on the northwest side of town by the Pioche Division of Forestry Honor Camp. The original school building was sold and is now privately owned.

25. The Pioche Town Hall

The Pioche Town Hall was built in 1936-37 by the Mormons with donated labor, material and money as the first LDS meeting house in Pioche. It was dedicated in 1950 when it was completely finished and paid for. In 1986 when the new LDS chapel was built, the old building was sold to the Town of Pioche for a public meeting place. Now known as the Pioche Town Hall, it serves many organizations for weekly or monthly meetings and social events. The most noteworthy activity held here is the "Pioche Heritage Days," which takes place in June or July and again on the Sunday of the Labor Day celebration. The presentation includes plays, usually one being a melodrama and the other an original, locally historical sketch about the colorful Pioche characters of the past.

26. Boot Hill

Crime was rampant in Pioche in the early 1870s. During the first settling of Pioche, it was said that 72 men "were killed with their boots on" before anyone died a natural death. Many of these men are buried in the "Old Boot Hill" Cemetery. A monument commemorating Boot Hill was built and donated by E. Clampus Vitus in 2009.

27. The Lincoln County Court House

The Lincoln County Court House was constructed in 1938 to replace the historic courthouse on the hill. It is a simplified version of the modern Art-Deco style, and it continues to house most all of Lincoln County's government functions. The Sheriff's Office and Jail have been moved north of town off S.R. 322. Excellent park facilities are located adjoining the courthouse with a swimming pool, ball fields, horseshoe pits, playground and picnic areas.

28. St. John's Masonic Lodge

St John's Masonic Lodge has been in continuous operation since 1873, making it one of Nevada's oldest lodges. It is constructed of stone and brick and is a typical "False Front Pioneer" style.

29. The Mountain View Hotel

The Mountain View Hotel was built in 1895 by the Ely Valley Mines to house their guests. It is a combination of styles including "Shingle" style and early 1900s "Classic Box." The building is presently in need of restoration.

30. Treasure Hill (Nevada Centennial Marker No. 5.)

Silver ore was discovered in this range of mountains in 1864, but no important developments took place until 1869 when mines were opened and the Town of Pioche appeared. Pioche soon became the scene of a wild rush of prospectors and fortune seekers and gained a reputation in the 1870s for tough gunmen and bitter lawsuits. Over 5 million dollars in ore was taken out by 1872, and by 1900 Pioche was nearly a ghost town. Designated the seat of Lincoln County in 1871, Pioche survived hard times as a supply and government center for a vast area. In later years, notably during World War II, profitable lead and zinc deposits were developed.

**31. Pioche Aerial Tramway**

This aerial tramway operated in the 1920s and 1930s carrying ore from the mines on Treasure Hill to Godbe's Mill in the valley. Built by Pioche Mines Company, the tramway was mainly gravity powered with the aid of a 5 horsepower motor. The ore in the full buckets rolled toward the mill and provided the momentum to return the empty buckets to the bin. In 1928, the cost of delivering ore to the mill via this tramway was six cents per ton.

**Bank Club of Pioche**

Cocktails, Music & Video Poker

723 Main Street - Pioche, NV 89043



Meet your friends in uptown Pioche

775-962-5116

PEGGY'S STORE

Open Saturday & Sunday

10:00 AM - 4:00 PM

Clothing, Household Goods & More



768 Main Street
Pioche, NV 89043

775-962-5636

**HOOLIHAN'S EXCAVATING, INC.**

UNDERGROUND SPECIALIST
652 MIDDLEGATE ROAD HENDERSON, NEVADA 89015
(702) 564-1480
FAX 564-7024

PIOCHE BIRDING ADVENTURES

By Barbara Rohde

Pioche is an excellent place for birding, not only right in the town, but also in some of the nearby State Parks and the wooded areas on public lands managed by the Bureau of Land Management. Listen in the morning, from your motel room or RV, for the raucous cries of the Pinyon jays that fly from one end of town to the hills above, in their search for pine nuts and juniper berries. These bright steel-blue birds tend to stay together in flocks, and they call to one another as they fly.

Mountain and Western Bluebirds are also bright blue birds, though much smaller than the jays. These insect-eating birds spend the winter around town, where they may find seeds and berries to eat; as it gets warmer, they return to their mountain habitat such as along the Mt. Wilson Back-country Byway, or around Highland Peak. Nuthatches and Chickadees may be seen or heard in the pine and juniper trees in the wooded outskirts of town. Red-shafted Flickers and several species of woodpeckers are also resident in town as well as in the wooded areas adjacent.

Spring brings the return of swallows and flycatchers of several varieties. Their favored habitat is around the town park, where they swoop low over the swimming pool and baseball field to catch flying insects. Say's and Black Phoebes, and Western Kingbirds also feed on those pesky insects, and can be seen in all parts of town. As the weather warms up and the wildflowers emerge on hillsides and in gardens, hummingbirds return to this higher elevation town. Black-chinned, Anna's, and Broad-tailed Hummingbirds are early visitors; the Rufous Hummingbirds generally come later in June. Western Tanagers, Bullock's Orioles, and several varieties of Warblers may be seen in the deciduous trees where they feast on caterpillars and insects throughout the spring and summer, and the Orioles also visit hummingbird feeders to augment their diet.

To see many varieties of ducks and shorebirds, take a drive to Echo Canyon and Spring Valley State Parks, east of Pioche via State Route 322. Echo Canyon Reservoir has a gently sloping shoreline that gradually drops throughout the summer; this is ideal for the shorebirds that probe in the mud for small fish and frogs. April is the best month to see a large variety that changes daily: Great blue herons, several species of egrets, Avocets, White-necked Stilts, sandpipers, and White-faced Ibis. Terns, gulls, and a variety of ducks also come through, including Cormorants, Teals, Ruddy ducks, Grebes (3 varieties), and even Loons. In canyons above the lake itself, you may see nesting Golden eagles and hawks, and hear or see both Canyon and Rock Wrens, and White-throated Swifts or Cliff Swallows. Occasionally you may spot the nest of Great Blue Herons, that stay nearly year-round at the reservoir, or be treated to the sight of a Belted Kingfisher (which nest in the mud banks along the stream). In the

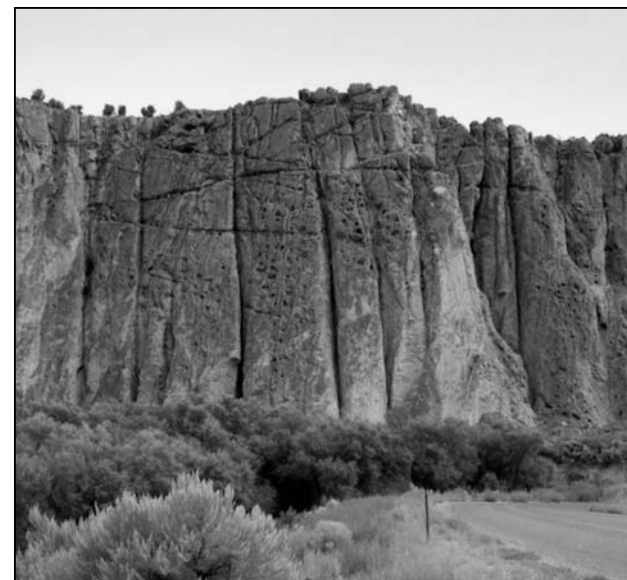


Meadow Valley Wash, Rose Valley

willow trees lining the stream coming into the lake, you may hear or see yellow-breasted Chats and the Common Yellow-throat, both warblers.

A County road continues east from Echo Canyon into Rose Valley, and this is a rewarding drive for birders. In the summer, bluebirds may be nesting near the alfalfa fields, where parents can find plenty of insects to feed their young. Lark Sparrows and Lincoln Sparrows may serenade from a fenceline, while you may catch a glimpse of Roadrunners pursuing their favored prey, lizards and snakes. Turning east after crossing the bridge in Rose Valley, the road continues through a narrow canyon of Ash-fall Tuff rocks, where the Cliff Swallows often nest within sight of the road. There are more willow and cottonwood trees lining the stream, where you have another chance to look and listen for Chats and Yellow-throats, or Black Phoebes. When the road emerges into Eagle Valley, the fields again provide opportunities for glimpsing insect-eating birds. Several large stands of cottonwood trees in the middle of the valley have been used as a Great Blue Heron rookery for decades. The most likely time to see the herons in the rookery is April through June; then the fledged young herons disperse to their own territories along Meadow Valley Wash.

The main street through Ursine in Eagle Valley twists and winds back to State route 322, which continues north to Spring Valley State Park. Meadow Valley Wash runs alongside this road, and there are several places to stop, look and listen for avian occupants in the willow, cottonwood, and box-elder trees. A few



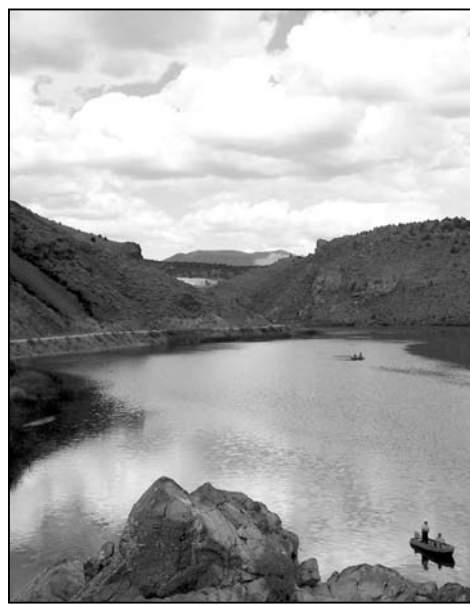
Echo Point, Echo Canyon State Park

stands of chokecherry and elderberry trees provide fruit for birds in the early fall. Venturing into the BLM's Meadow Valley Campground may provide glimpses of Blue-grey gnatcatchers, Solitary vireos, and Nuthatches, though they are more likely to be heard than seen.

Spring Valley State Park's centerpiece is Eagle Valley Reservoir, which provides habitat for many ducks and geese. The paved road turns to graded gravel where it skirts the reservoir to the north, and continuing along this road may reward you with glimpses of Egrets and Herons in the wet meadows above the lake. Several miles beyond the park headquarters, at the 7-L Ranch, there is a meadow where Sage Grouse congregate, in a "lek," in the springtime. Ask the Ranger for directions if you are interested.

Returning to Pioche on State Route 322, keep an eye out for hawks and eagles, and especially for Mule deer and occasionally Elk that cross the road at all hours.

If you have another day to enjoy in or around Pioche, take a drive south to Cathedral Gorge or Kershaw-Ryan State Parks. The cliffs in both of these geologic-wonderland parks sustain rock and canyon wrens, white-throated swifts and violet-green swallows, and nesting habitat for owls, ravens and hawks. Additionally, the deciduous trees at Kershaw-Ryan and the seeps along the canyon floor provide habitat for rarely-seen Summer Tanagers, and Rufous-sided (spotted) Towhees. Gambel's quail and Chukar Partridges might be seen at either location, along with Roadrunners.



Eagle Valley Reservoir

EAGLE VALLEY RESORT TO HOST FISHING TOURNAMENT

Eagle Valley and Echo Canyon are two of the jewels in Lincoln County's crown. The County provides guests and residents alike with the many outdoor delights that make a sportsman's life close to perfect. Recreational opportunities can range from family outings to serious expeditions for a day, a weekend, or a week and longer. Lincoln County is a year-round playground for everyone.

An angler's special event takes place in May and this year, the \$50,000 Fishing Tournament will be held on May 1 and 2 at Eagle Valley Reservoir and Echo Canyon Reser-

voir. This year will be the 8th annual extravaganza. The previous 7 years have brought together many people of all ages, and several have formed lasting friendships.

During the event, entrants will try to hook one of 20 tagged fish. Only one will be marked \$50,000 and the other nineteen will be worth \$100 each. Proceeds from the May event will fund the youth fishing tournament in June 2010. The goal is to encourage youth fishing with the hope they'll develop a lifelong interest in outdoor activities.

Eagle Valley Resort will be handling reg-

istration for the \$50,000 tournament and entrants will receive the rules and regulations when they sign up. The cost is \$30 per person, including children. A Nevada fishing license is required for ages 12 and older, and the tournament is limited to the first 600 entries. For additional information, contact Eagle Valley Resort 775-962-5293.

Sponsors for the 2010 event are: Eagle Valley Resort, Lange Plumbing, Flying J Truck Stop, Hurst Sports Center, Hendrix's Outdoor, Ed Wright, Rafael Construction, and Diesel Specialists, Inc.



Kershaw-Ryan State Park

STATE PARKS IN LINCOLN COUNTY

By Barbara Rohde

Nevada

Lincoln County is blessed with some of the greenest scenery in Nevada, and within a 50-mile radius of Pioche, also has one of the largest concentrations of Nevada State Parks. In 1935, wanting to diversify Nevada's economy beyond mining and agriculture, the State Legislature created the State Park System, and in 2010 the Nevada State Park System celebrates its 75th year. Residents of Lincoln County

were pleased that three of the first four State Parks were in their own back yard: Cathedral Gorge, Beaver Dam, and Kershaw-Ryan.

Cathedral Gorge, located 10 miles south of Pioche right along U.S. Highway 93, dated back even further, however, having been declared a "State Park and Wildlife Refuge" by Governor James Scrugham in 1926. This scenic canyon park had been a favorite among Lincoln County residents from the 1890's, when its name was changed from "Panaca Gulch" to "Cathedral Gulch" by the wife of Pioche mining engineer William S. Godbe. Mary W. Godbe sometimes accompanied her husband on his trips to Bullionville, and she would ride her horse and buggy just over the hill to explore the eerie rock formations along the base of the eastern-most cliffs of the gorge. She exclaimed "Why, this is like God's own Cathedral," and she extolled the scenic qualities of the gorge to anyone who would listen. As it turned out, a lot of people listened, and started visiting the gorge, to explore the slot canyons (nick-named caves), and enjoy a pleasant Sunday outing in the natural setting. During the 1920's, many open-air pageants and plays were put on in the Gorge, and in 1964, the Nevada (and



Cathedral Gorge State Park

Panaca's) Centennial Pageant was produced with the backdrop of the Gorge, in the area where the 1930's C.C.C.-constructed picnic ramada still stands. Over the years, improvements were made, including a 22-unit campground and a nice tree-shaded group area, along with the Regional Information Center at the park's main entrance. A network of trails provides access to the park's features, and back-country.

Beaver Dam State Park (35 miles east of Caliente) was also established in 1935, having been "just off the main road" for the earliest years of its use. The little community of Clover Valley (Barclay) was established in 1864, at the same time as Panaca, and families from both of those towns would often go to visit families that lived in Beaver Dam Wash. They would go fishing along the natural stream that was dotted with beaver dams, or just enjoy a picnic under the native cottonwood and willow trees along the stream. The "Acoma-Shem Highway" was the first "all-weather" road from Lincoln County into Utah, and it passed only a few miles from Beaver Dam Wash. It was a "natural" to become a Nevada State Park; although the 1935 Civilian Conservation Corps crews spent a lot of time constructing camping and picnicking facilities at Beaver Dam, the floods in 1937-38 destroyed most of their work. A man-made dam in 1961, Schroeder Dam, controlled the floods, and provided a small lake for fishing; but severe floods in 2004-2005 breached the dam and led to its destruction. The area once again is a natural setting for primitive camp-



Spring Valley State Park



Kershaw-Ryan State Park.

ing; two developed campgrounds with 30 sites are set among the pinyon and juniper forested setting of Beaver Dam canyon, and a network of trails offer exploration opportunities.

Kershaw-Ryan State Park (2 miles south of Caliente) was the third park established in 1935. The Samuel Kershaw family had homesteaded this little canyon in 1870, and had an orchard and garden that was watered by the natural springs that emerge from the base of towering igneous-rock cliffs. After 30 years (and Mr. Kershaw's demise), the canyon was sold to James and Martha Ryan, who did not actually live in the canyon. During their years, local residents would come to picnic and enjoy the shady canyon, and the Ryans decided to donate Kershaw Canyon to the State of Nevada in 1934, to be made into a public park. The C.C.C. companies developed camping and picnicking sites, a wading

pond (from one of the springs), and a caretaker's cabin. The City of Caliente generously provided a caretaker during the years that Nevada's State Parks were not funded by the Legislature; and when funds became available in the early 1960's, a 12-unit campground with modern toilets and showers was built in the area surrounding the wading pond. Floods in 1984 destroyed most of the manmade features of the park, and it was a 13-year struggle to rebuild and reopen the park in 1997. In 2009, the long-awaited new campground opened, located well away from the flood channel.

Spring Valley State Park (18 miles east of Pioche) started as a county park, when Eagle Valley Dam was built in 1965. Eagle Valley Reservoir once covered 65 acres, but has shrunk a little over the years.

Continued on Page 10

Eagle Valley Resort

Stay A Day—Stay A Year

RV Supplies, Store, Fast Food, Ice,
Wood, Bar, Gaming, Pool Table & Lounge

RV Spots & Cabins to Rent

www.eaglevalleynv.com



12555 Resort Road
HC 74, Box 262-2
Pioche, NV 89043
775-962-5293

State Parks of Lincoln County

Continued from Page 9

It provides a good trout fishery, with deep and cold waters that fill the canyon at the southern/western end of Spring Valley. Water is released for ranching in Eagle Valley and Rose Valley, for natural irrigation of the pastures.

A campground in Horsethief Gulch was built at the same time as the dam, and the campsites are tucked among the pinyon and juniper woodland. In 1969, Lincoln County turned over operation of the park to the Nevada State Park System, and it was renamed as Spring Valley State Park, though locals often just call it "Eagle Valley." The park now includes the pastures, and several of the homesteaders' homes in Spring Valley-proper. One of these, the Stone Cabin Living History Museum, is available for tours, having been renovated in 1995 to its original appearance. There is a trailhead at the Stone Cabin for a 2-1/2 mile trail that ends at the "Ranch Campground," a 6-unit "dry" campground near the park headquarters, the old 7-L (Hollinger) Ranch.

The graded gravel road continues beyond the 7-L Ranch to become the "Mt. Wilson Back-country Byway," which loops back around to Highway 93 about 60 miles later. High-clearance vehicles may enjoy this road in the summer months; it is often snowed in by November.

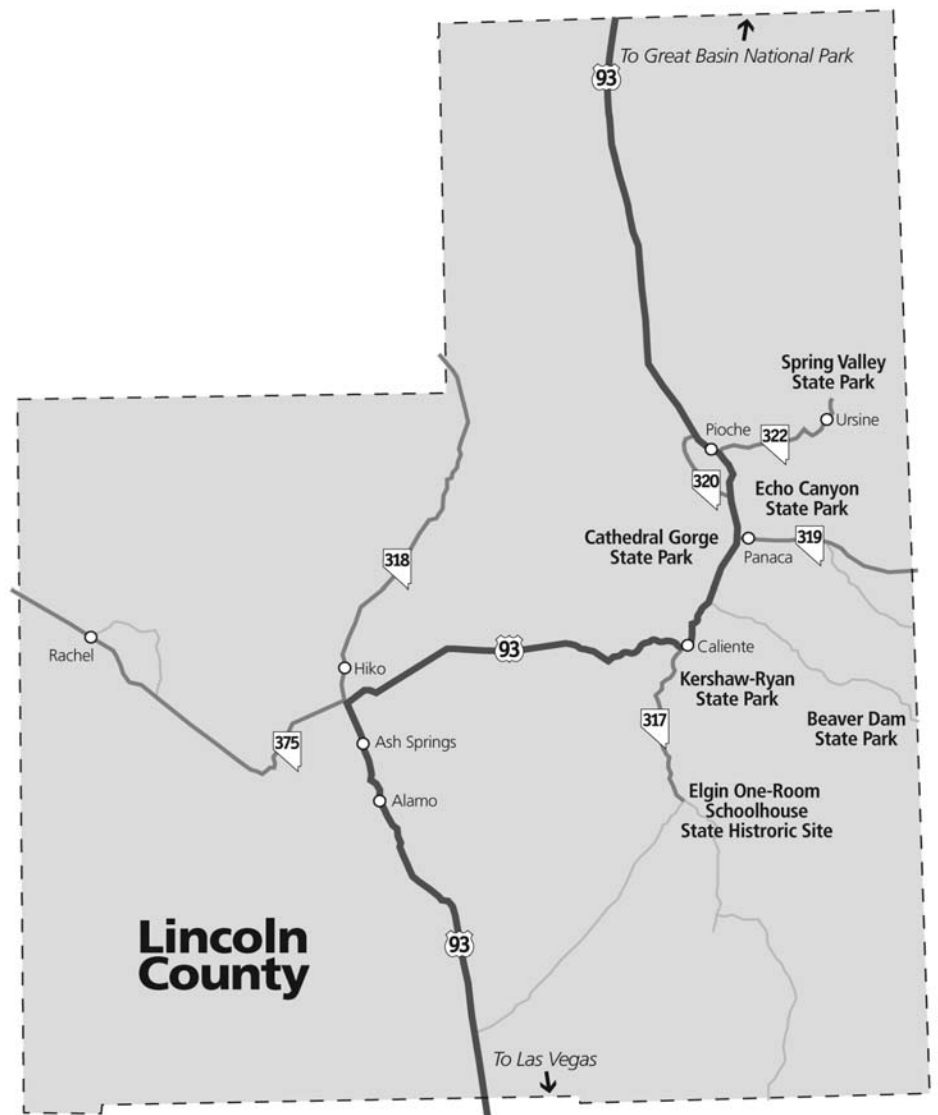
Echo Canyon State Park (12 miles east

of Pioche) also started as a county park, when Echo Canyon Dam was built in 1969. Its campground amenities were identical to those at Spring Valley, except for lacking showers in the restrooms, or power to keep the restrooms heated and open through the winter months.

After completion of the dam and campground, the county turned over operation of the park to Nevada State Parks. An ongoing problem since the dam's first years, is the loss of water through the gravel lakebed (which was not "sealed" when the dam was built). Echo Canyon dam was built in "Dry Valley," which the pioneers named for the habit of the Meadow Valley Wash (stream) going underground at this point, and re-emerging from springs a few miles further south.

However, the lower water level of the lake makes it an ideal "warm water" fishery, for bass and crappie, and also a good location for finding "trophy size" bullfrogs (when the Great Blue Herons don't beat you to the catch). Another feature of this park is that all portions of the shoreline may be reached by vehicle (Spring Valley has only one side of the lake accessible by car, and by scrambling down a hillside). It is also less crowded than Spring Valley, and is the best location near Pioche for seeing ducks and shorebirds.

The newest addition to the State Park System in Lincoln County is the Elgin One-



Room Schoolhouse State Historic Site. This original schoolhouse was restored by the family whose members built it in 1922 to educate the schoolchildren of ranchers and railroad workers in lower Rainbow Canyon. At this time, there was no "bus service" as we know today, and the children needed to be educated closer to their homes.

By the 1960's, bus service was increasing, and the number of families living in Rainbow Canyon decreased – so the school closed after the last Bradshaw child finished 8th grade. In 1998, one of the Bradshaw family members decreed in his will the wish to see the schoolhouse restored; and in two short years, it was dedicated by the Bradshaw families and friends that funded the restoration. In 2005, the Bradshaws donated it to the Nevada State Park system for operation and maintenance. The flooding down Rainbow Canyon in January, 2005, has limited access for the present; but State Route 317 is undergoing repairs during spring of 2010.

We welcome you to explore and enjoy the Nevada State Parks!

Echo Canyon State Park.

MONKEY WRENCH THE WIDOW-MAKER

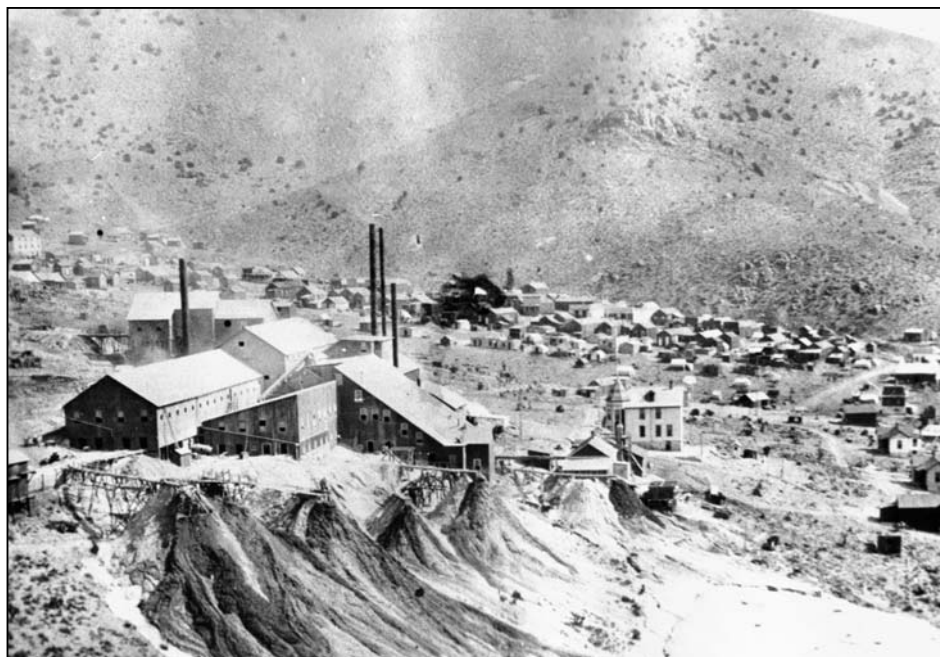
By Leo Schafer

The following story is one of the discovery of a mining district and that includes, of all things, a monkey wrench and a deadly substance that took its toll on the citizens that lived in the adjoining community. Pioche was not the only mining town in Lincoln County. Pioche was founded to support the vast silver mines in the immediate area. There were other towns in the county that were started in that same fashion but none reached the mining production or population that Pioche did. Another town, Delamar, was second to Pioche in mining and population.

Delamar's peak population reached about 3,000 and for several years, the ore produced there was over one half of Nevada's ore output. Unlike most mining districts in Nevada this was not a silver strike, but gold. Gold and silver often reside together but this strike was a true gold strike. It's most remembered and notable feature was its reputation as a "Widow Maker." Unlike Pioche, Delamar did not sustain a high rate of homicides; its foremost killer was a substance that was extracted from the ground and was not a precious metal. It was a substance produced during the mining and milling process known as "Delamar Dust" or "Dagger Dust." It was silicosis that killed the people. Breathing silica dust is like breathing ground glass.

Former Delamar resident Frank Pace, "Most of the work was done by farm boys who came over from Mormon settlements in southwestern Utah. They had never even heard of silicosis—but after three or four months in the mines and mill at Delamar, they would start coughing. Some died in a few weeks; others hung on for years—too sick to work, too stubborn to die. The air was so impregnated with silica dust that even women and children who never went near the mines or mills would occasionally contract silicosis. Even horses eventually died from the dust."

The first death associated with this region was not from the dust; it was from lead. This episode begins in Pioche at a boardinghouse



operated by H. W. Newton. There was Indian at hand by the name of Chitowich who performed odd jobs at the boardinghouse for meals and spending money. It seems Chitowich had a fondness for whiskey and a portion of his free money went to that vice. Periodically, the Indian would leave the confines of Pioche and go on a hunting trip. After one such trip to the southwest, he returned with not only a hearty appetite and robust thirst, but this time he had also brought back a few rocks. These rocks drew the attention of Newton who could see they contained specks of gold. Newton had the samples assayed and the results produced an enormous reduction in the amount of odd jobs the handyman had to tend to. His duties were suspended and his available cash took on a course in the opposite direction. Chitowich quickly adapted to this new lifestyle.

Newton took on one of his borders, a Frank Lamson, as a partner. They approached the Indian and tried to persuade him to divulge the location of the ore bearing specimens. But showing



the white men the location of the ore would displease the other Indians of the tribe. The partners were finally successful by threatening the elimination of Chitowich's newfound way of life. He agreed to show them the location for a continuance of his agreeable new standard of living. The Indian, his 11 year old son George, and the two newly outfitted prospectors left Pioche—not all would return. The second night out from Pioche, they were close to their destination. They set up camp and after dark, the

prospectors observed a fire in the hills some distance away; and then they saw another fire in a different location. Both fires would flash and then vanish. The prospectors assumed these fires were Indian signal fires and presumed that Indians were using blankets to conceal and then uncover the flames. This caused uneasiness in the camp. The nervous prospectors had no idea of what was being signaled, but Chitowich apparently had some notion for he rose up and headed for his horse. He was ordered back to camp at gunpoint. The prospectors now suspected he was going to betray them. After what must have seemed an eternity, but was only an hour or two, a sound was heard in camp that was described as "...the weird chant of the Paiute braves..." At this time Chitowich began to sneak away. Both Newton and Lamson warned him not to leave camp or they would kill him. As the bizarre chants became closer he made a mad dash for the brush.

Both men fired; the lead from one of guns found Chitowich who cried out, but he continued to flee at a slower pace. The prospectors were certain he was going to bring the other Indians back. They pursued him and after catching up they again shot him, this time it was fatal. They left him where he fell and returned to where they had bedded down to find the son had decamped. They felt this was just as bad as if his father had escaped, for he would undoubtedly seek out the other Indians and bring them back. The two prospectors loaded their wagon and made a hasty exit to Pioche, thus ending their pursuit of the gold. The experience must have been very frightening because they never went back; things were over.

As far as the Indians were concerned, however, things were not over; they were just beginning.

That summer there were exaggerated reports outside of Pioche of Indian atrocities. Most amounted to nothing, but there were some isolated cases of white men being killed. There was one Indian that seemed to be the ring leader of the mayhem and it was Tempiute Bill,

Continued on Page 12

www.kimley-horn.com

SOME THINGS SHOULD BE EASY TO FIND

Dave Wilson, P.E.

 Kimley-Horn and Associates, Inc.

WANTED

a great engineer

PH: 702.734.5666

LAS VEGAS | RENO

Celebrating 102 Years

Serving Great Food

Historic **SILVER CAFE** 

673 Main Street - Pioche, NV 89043

Breakfast . Lunch . Dinner

Silver Mine Gift Shop
Video Rentals and Gift Items

775-962-5124

Widow-Maker, Continued from page 11

son of the slain Chitowich. Also involved to some degree were his two brothers, Johnny, and 11 year old George who had escaped after his father's murder. The citizens of the settlement of Hiko, west of Pioche, became outraged when three prospectors leaving Pioche for country to the west were ambushed by Bill and a small band of Indians. The Honan Party crossed paths with Bill's gang near the settlement. Two of the party were killed but William Honan, wounded, made it to Hiko. The authorities in Pioche were informed of the killings and wired the Governor of Nevada and the United States Army at Fort Cameron, Utah. Troops were dispatched to the area but by the time they arrived, the Hiko residents had taken Tempiute Bill and another Indian named Moquitch into custody.

The two were placed standing in a wagon situated by the only two-story building in Hiko. A plank was placed through a second story window and two ropes were attached to the plank. The opposite ends of the ropes were connected to Bill and Moquitch, specifically around their individual necks.

From the *Pioche Daily Record* is the description of what happened next, "...the horses attached to the wagon it is supposed took fright at something and dragged off the wagon, leaving the two Indians hanging by the neck, and as no one relieved them they very soon died..."

Not being quite satisfied with that, the citizens of Hiko next declared war on a neighboring Indian camp and killed about half a dozen Indians including Tempiute Bill's brother Johnny.

During this period, 1874-1875, the killing of Chitowich had not been made public. Both Newton and Lamson names appear in the list of Pioche registered voters in 1874. It is not known if they remained in Pioche long after their incident with Chitowich. But the legend of the incident lived on past the murder of Chitowich. In a letter dated November 18, 1891, to Nye County Deputy Sheriff George Nicholl, from a mining man in the same locale where Chitowich had been killed.

Mr. Hartwig A. Cohen told this story, "...an Indian by the name of Bitter Sweet (Chitowich?) brought some samples into Pioche...years ago. Two prospectors managed to show them the mine; all three started out to where the mine was situated. When the party reached the neighborhood where the mine was supposed to be, the Indian for some reason refused to go further, and the prospectors sus-



pecting treachery shot the Indian..."

Of the two prospectors, Lamson seems to fade from view but Newton surfaces again in Tintic, Utah. It was at that place years later he revealed the details of the expedition and the fate of Chitowich.

The "lost mine" did not stay lost. Another letter, this one dated February 23, 1892 and written by a Samuel Reed, describes the sighting of the lost mine,

"...In the summer of 1889 two young men John E. Ferguson and Joseph Sharp started from Hiko on a prospecting tour and soon after leaving home they discovered that they had neglected to take with them anything to break rocks with, consequently they kept an eye open for something to supply the place of a hammer. The first and only thing that was discovered was the main part of a monkey wrench with all the attachments long since departed and with this they proceeded on their trip. Going to the mountains ... they discovered some very rich float, with nothing but the old monkey wrench to prospect with. Hence the name given to their discovery was the Monkey Wrench Mine.

"In the summer of '91 the Fergusons bought out Sharp [it has been reported he was given a wagon and a team of old white horses, it has been further reported that Joe Sharp "was the worst trader in the world"] and proceeded to develop their new discovery and were crowned with the unexpected success of assays running as high as 1716 ounces [per ton, this would equate to nearly \$2,000,000 at the time of this writing]. They then formed a co-partnership with a Mr. Hartwig A. Cohen...about the first

day of 1892 the Ferguson brothers and J. J. Manning, Mr. A. W. Geer and W. A. Wilson began to arrive soon after and some other strikes were made...Parties of prospectors have traced the same formation..."

The original name of the mining district was the Monkey Wrench, but perhaps this was not an appropriate moniker to draw outside investors. A vote was taken by the men on the ground, and the district was renamed the Ferguson District. The district did not maintain the very high values of the original assay, but production of the mines was phenomenal. Several town sites sprang up around the various mines. In 1894, Captain John Raphael De La Mar of New York became interested. The Captain had invested in mining in Idaho and Utah. Soon after his inspection of the mines in this district, he formed the DeLaMar Nevada Gold Mining Company. He hired Mr. Hartwig A. Cohen as superintendent of the operation. He constructed a company town to, among other things, shelter his employees. There had been a modest camp at that location called Reeves, but as the camp was growing into a town the name was changed to Delamar (the Americanized spelling). The town grew, the mines were enlarged and a mill was erected. There was a local newspaper that was published daily for a while.

The town and the mines thrived for several years, marred only by the high rate of deaths due to the dagger dust. By the early 1900s, the end was in sight with many of the miners moving to the new rich strike at Tonopah, and later Goldfield, Nevada. By 1914 the post office that had been opened there in 1894, was closed. The once

flourishing Delamar was essentially a ghost. In 1918 the Captain died in New York City.

Every good old mining ghost town has a story of hidden treasure that has never been found. The treasure in almost every case involves pilfered bullion from one of the mines. Pioche, although not a ghost, has its legend of the bars of bullion Jack Harris buried north of town. Harris did not pilfer it from the mines, he used the second most popular method of obtaining ill-gotten gains; he robbed a stage coach. Back to Delamar, the lost treasure was acquired by one of the local mine officials who connived with an assayer, and they set aside a great amount of gold. The mine official kept charge of the loot and, staying with the tradition of these legends, he buried it in some place only he knew of. And, still keeping with custom of these tales, he died suddenly not revealing the location. Of course this story must close with the statement that after all these years it has never been found and is still near Delamar. At today's price of gold the value of this treasure would be 3.8 million dollars. But again staying with tradition, these things are often exaggerated and I am quite convinced the actual value would be only 3.5 million dollars. Good hunting!

A trip to Delamar is an easy one from Pioche. Traveling on route 93 south out of town proceed through the town of Caliente. When you have gone about 40 miles, just past mile marker 77 a sign marked with the name Delamar (sic) directs you to turn left. The distance to the site is 15 miles on a typically well graded gravel road. Stay on this road for about five miles and after crossing a cattle guard, there will be a left turn. The turn is well marked by a BLM sign. Just prior to the last hill into Delamar is the Helene cemetery on the right side of the road. Helene was another town just to the northeast of this cemetery. Remnants of some buildings may still be viewed. It was named for Hartwig A. Cohen's wife and a post office was established there in 1892. Continuing on to Delamar, the mill tailings are easily spotted and the town itself may be explored. Traveling on other roads in this area may require high a clearance four wheel drive vehicle.

Stay out of the mines! Advise someone where you are going and when you will return. The road is generally in very good shape, but after a storm this condition might change; if the road does not look safe turn around. More information may be obtained from the Caliente BLM Field Office at 775-726-8100.

Locally Owned - Where Locals Shop

MINER'S MARKET, LLC

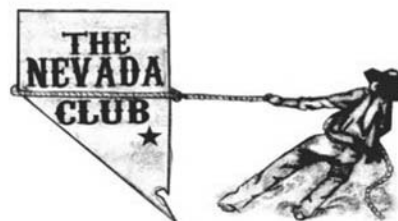
The Pioche Grocery Store

*Celebrating
1st Anniversary*

Mon-Sat 9 AM-6 PM Sun. 10 AM-2 PM

663 Main Street - Pioche, NV 89043

775-962-5777



**Uptown Pioche
738 Main Street
Pioche, NV 89043**

775-962-5170

Wed Night - Karaoke

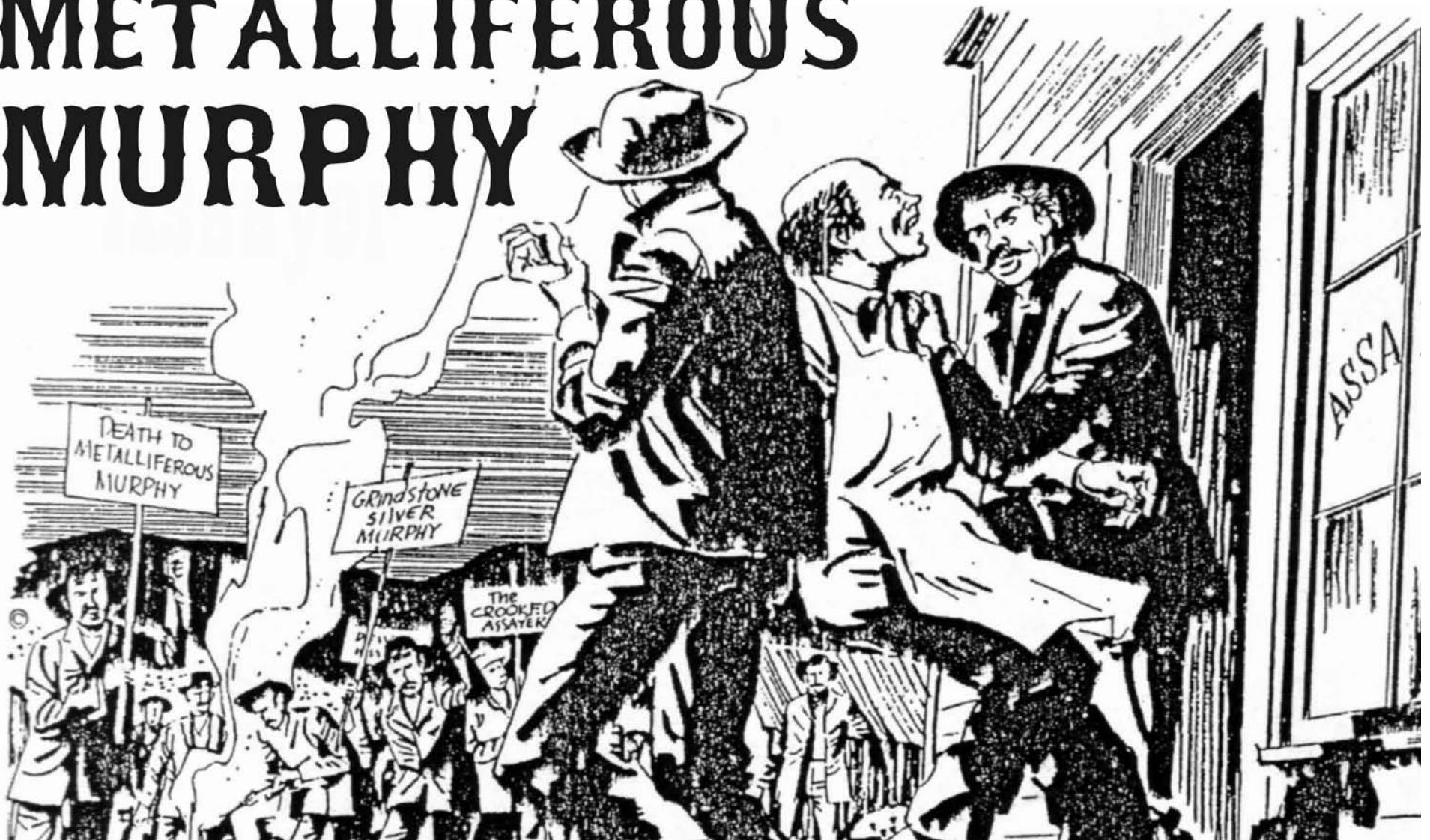
**Thurs Night - Ladies Night
\$.50 off all drinks after 6 PM**

**Wii Games available to play anytime
during day hours & weekends**

New Slots, New Ownership

"Friendly Bartenders"

METALLIFEROUS MURPHY



Metalliferous Murphy was the town assayer in Pioche back in 1870, but his reports on the ore he tested were so uniformly optimistic they gradually awakened the suspicions of many of the miners. Talking about it one day, a group of citizens chanced to see a wagon go down the main street. A grindstone toppled from the rig and shattered on the hard dirt street.

One of the miners had a stroke of genius. He picked up the fragments of the grindstone and suggested they give it to Murphy as an "ore sample", requesting an assay. In 1870 any mining expert "knew" that silver could never be found in sandstone. It would be a fair test of Murphy's honesty.

Now the assayer was a leading citizen in

every pioneer mining community. His word was supposed to be sacred and his honor above reproach. He was in on every secret, knew the true value of every claim. He was supposed to keep his eyes open and his mouth shut, and to be above any suspicion, bribe, or influence. His word made or broke many a mining company. So the reliability of the town assayer in the mining town of Pioche was a matter of extreme urgency. If Murphy was overly generous in his reports, then every claim and mine in the district was overvalued. It was a matter of vital concern to every man in the area. On the other hand, it was equally important to Murphy (if he had known about it), for any shadow on his reputation would follow him everywhere in the

world, and ruin him for life. Metalliferous Murphy's reports were of prime importance!

Innocently, Metalliferous Murphy accepted the "ore sample" and ran his tests. Innocently, he gave his report to the waiting miners. "Ran 220 ounces of silver to the ton. Got a mighty fine mine there, men ..." was about as far as his report went.

Some historians claim the outraged miners strung Murphy up to the rafters of his own building. Most accounts seem to agree that a mob formed and ran Murphy out of town on a rail after tarring and feathering him. In any event, Murphy's reputation was ruined.

But Murphy refused to accept defeat. After cleaning himself up, he began a dili-

gent investigation. He traced the old man who had owned the original grindstone. He tracked it back to the original small sandstone quarry near Leeds, in Utah. Although all geologists agreed it was impossible, Murphy found silver in the sandstone. He staked out his claims and then the fun began. A great boom struck the area. Pioche was almost deserted as every able-bodied citizen rushed out across the desert.

The new strike was called Silver Reef, and the arriving Pioche miners found their old friend Metalliferous Murphy well in command of the situation. Murphy is said to have made a fortune. And Silver Reef boomed for about ten years, producing some \$10,500,000.

The Rag Doll

Unique Handcrafted Gifts & Cards

709 Main Street - Pioche, NV 89043

Celebrating 22 Years

Owners, Ann & Gary Mills

775-962-5211



John Linerode

Making What's Old New Again

Dougherty's Fine Jewelry



20 Years in Business

Jewelry Manufacturing and Restoration
Jewelry Repair & Casting-- Silver & Giftware
Trade Work Available

689 Main Street
Pioche, NV 89043

775.962.5511
702.622.4999



The Million Dollar Court House

Million Dollar Court House

Continued from Page One

Across from the sheriff's office is the old Post Office. The beautiful oak counter was brought from Caliente in 2000 and dates back to around 1901 (Rumor has it that the good folk of Caliente would like to have it back...Fat Chance!). In the back part of the old P.O. is a collection of old mining tools and artifacts, including a single-jack pneumatic driven drill, known affectionately as the "widow maker." It was used to mine the gold from the "deadly dust of Delamar," where some 300 miners died from silicosis and cholera from 1895 to 1905.

Down the hall on the first floor is the universally despised office of the Tax Assessor, across from the District Attorney's office. We proudly boast of having the original copies of the Nevada Statutes (before any revisions) from 1864 when Nevada was admitted to the Union. We also have an almost complete set of original copies of the 'Pioche Record' from the 1870s.

All the really fun stuff is upstairs (22 steps, all of which I have names for), including the County Clerk's office. Here you can find records of all marriage licenses issued up to 1969, so if you or your grandparents were married here you can obtain copies. I have a copy of my great grandparents' license from Dec. of 1893 – How cool is that!

Right across the hallway is a display of the Volunteer fire fighters equipment and memorabilia from 1863 to present. Pioche was famous for having burned down at least every other year.

The stately Judge's Chambers, dedicated to the Orr family, still has the original seals of the 7th Judicial District Court and a collection of law books from floor to the 15 foot ceiling. These law books, as well as almost everything else in this historic building, have been donated from private family collections.

Now, we move into the main courtroom. Hush up!! Court is in session. It's a murder trial of a no good claim jumper who shot the rightful mine owner in the back and threw his body down a mineshaft. He wasn't apprehended until he'd worked that mine for at least six months and \$16,000. The murdered miner's wife is sitting there with the D.A. calling for the death

penalty. From the look of the jury, "Hangin's too good for the back-shootin rat!"

Speaking of hanging, on the walls of the courtroom are 28 original watercolors of Pioche and the surrounding country by R.G. Schofield. Mr. Schofield was a watchmaker, goldsmith, poet and an accomplished landscape and portrait artist. He lived in and around Pioche from 1877 until his death in 1913 (On a personal note: these paintings are my favorite of all the displays. They are beautiful in their detail and vivid colors and well worth the visit just to see these precious works of art.)

Now, just ten feet outside the rear door of the courtroom is by far and away the most popular attraction on the tour. The old Lincoln County Jail, built in 1871, was originally two stories high. It was constructed with locally quarried stone and accented with bricks shipped in from Salt Lake City. There are three high security cells for murderers and worse, and one large holding space for common criminals. The walls are at least a foot and a half thick of solid stone. But who did they lock up in there ... You guessed it... Hard rock miners, and what do they do for a living? Dig through solid rock. So, after the big jail break of 1877, when 8 men tunneled through a side wall and escaped, they lined all of the interior walls and doors with 3/8-inch boiler-plate so they could never dig out again. Escape they certainly did, but dig out, they definitely did not. The story goes that the sheriff tracked all eight prisoners down, but he didn't bring any of them back. They all died of lead poisoning —.45 caliber lead.

So, that's my story and I'm sticking to it (unless a better one comes along).

My partner Jane Humphrey and I will be glad to give you or your group a personal tour of the old courthouse any day of the week from 10 am till 3 pm during the season. If you would like to set up a tour call Leslie Childers at the Lincoln County Museum at 775-962-5207 or the MILLION DOLLAR COURT HOUSE at 775-962-5182. We can customize for any age group, especially schools. But be aware, we just might have more fun than you do. Oh, I should mention the tour is free. Again, the Courthouse is open mid April to mid October.

PIOCHE BIBLIOGRAPHY

A Yankee trader in the gold rush; the letters of Franklin A. Buck. Compiled by Katherine A. White ([http://lcweb2.loc.gov/cgi-bin/query/r?ammem/calbk:@field\(DOCID+@lit\(calbk067div138\)\)](http://lcweb2.loc.gov/cgi-bin/query/r?ammem/calbk:@field(DOCID+@lit(calbk067div138)))).

Boot Hill, The Pioche Cemetery and the Story of the Pioche Boom; by Leo Schafer; Book Connection, LLC, Pioche, Nevada; 2008; 196 pp.

The Complete Nevada Traveler; by David W. Toll; Gold Hill Publishing Co., Inc.; 256 pp., 2008.

I Dig Pioche, Historic Pioche Nevada; Compiled by Corinne Fullerton Shumway and Peggy Draper Hone; Published by the Pioche Historical Society, 2005, 462 pp.

Pioche Chamber of Commerce web site, www.piochenevada.com.

Greater Lincoln County Chamber of Commerce web site, www.lincolncountynevada.com.

Nevada Ghost Towns & Mining Camps by Stanley W. Paher; Howell-North Books, Berkeley, California, 1970, pp. 290 to 308.

The Sagebrush Ocean, A Natural History of the Great Basin by Stephen Trimble; University of Nevada Press, Reno and Las Vegas, Nevada, 1989, 248 pp.

Nevada Historical Marker Guidebook, Third Edition; Edited by Dave Basso; Nevada Publications, P.O. Box 15444, Las Vegas, Nevada 89114, 1986, 128 pp.

The Backyard Traveler Returns, 62 Outings in Southern, Eastern and Historical Nevada; by Richard Moreno; Published by Carson City Children's Museum, 1992, 262 pp.

Nevada's Weather and Climate; by John G. Houghton, Clarence M. Sakamoto and Richard O. Gifford, Special Publication 2, 1975, Nevada Bureau of Mines and Geology, Mackay School of Mines, University of Nevada Reno, 78 pp.

Shrubs of the Great Basin, A Natural History; by Hugh N. Mazingo, drawings by Christine Stetter; University of Nevada Press, Reno and Las Vegas, 1987, 342 pp.

Nevada, A History of Changes; by David Thompson, A Publication of the Grace Dangler Foundation, 232 pp.

Forty Years in the Wilderness, Impressions

of Nevada 1940-1980; by James W. Hulse, Nevada Studies in History and Political Science No. 22, University of Nevada Press, Reno, 1986, 141 pp.

An Interview with Gue Gim Wah; An Oral History conducted and edited by Robert D. McCracken, Lincoln County Town History Project, Lincoln County, Nevada, 77 pp. <http://www.lsndocuments.com/Ethnography/wah.pdf>

Driving and Walking Tours of Lincoln County Nevada.com, published by the Greater Lincoln County Chamber of Commerce with a grant from the Nevada Commission on Tourism, 34 pp.

Geology of the Great Basin by Bill Fiero, University of Nevada Press, Reno, 1986, 197 pp.

Nevada Map Atlas; Nevada Department of Transportation, 1263 South Stewart Street, Carson City, NV 89712, 775-888-7000, pio@ndot.state.nv.us, www.nevadadot.com.

Nevada Department of Wildlife, <http://www.ndow.org/>.

Bureau of Land Management, http://www.blm.gov/nv/st/en/fo/ely_field_office.html.

Nevada Division of State Parks, <http://www.parks.nv.gov/>.

Nevada Commission on Tourism, <http://travelnevada.com/>.

Treasure in the Hills; Families of Pioche, Nevada & Nearby mines, ranches & valleys; Compiled by Corinne Fullerton Shumway; Published by the Pioche Historical Society, 2007, 539 pp.

Treasure in the Hills, Families of Pioche, Nevada & Nearby mines, ranches & valleys, Volume II; Compiled by Corinne Fullerton Shumway; Published by the Pioche Historical Society, 2009, 362 pp.

Geology and Mineral Deposits of Lincoln County, Nevada, Nevada Bureau of Mines and Geology Bulletin 73; by C.M. Tschanz and E.H. Pampeyan, Mackay School of Mines, University of Nevada, Reno, 1970, 188 pp.

Law and Disorder in Pioche; by Leo Schafer, Book Connection, LLC, Pioche, 2009, 216 pp.



NEW BUSINESS



DOUGHERTY'S FINE JEWELRY

John Linerode opened Dougherty's Fine Jewelry at 689 Main St., Pioche, Nev. in July 2009. He worked many years perfecting his trade and has become a fine craftsman. John has a strong desire for quality and integrity in everything he does and customer service is a priority in the Pioche store.

Customers will find a wide variety of gemstone and diamond rings, earrings, bracelets, and chains on display. The store carries mostly 14k gold jewelry, some silver, and some custom pieces. There are also curio pieces and unique bird and animal boxes. Many jewelry items on display are one-of-a-kind; they were made by John in the Pioche shop. He also does restoration and all kinds of repairs. He will even melt down a customer's old gold jewelry and create a new custom piece.

John's family members were also in the jewelry business. His grandfather, Robert Dougherty, became fascinated with mechanical things, when he started working at the famed Dueber Hampden Watch Co. He went on to perfect many voting safeguards on the Shoup voting machine. Robert and Mary Dougherty were both watchmakers, and in the 1940s they opened a jewelry store in Louisville, Ohio. John's mother started working in her parents' store at the age of 15, and his father was also an expert watchmaker and was involved in the family business. John began his career in grandparents' store in Ohio where he was a gopher. He swept floors, ran errands, cleaned clocks, and worked his way up to soldering charms on silver bracelets, for which the store charged \$.25 each. In high school, John earned \$25 a week by working at the store after school and all day Saturday.

John and his brother, Steve, became jewelers instead of watchmakers. In 1988, John, Steve, and their mother, Margaret, opened a jewelry store in Las Vegas. Both John and Steve tired of the big city atmosphere and decided to return to their "small town roots." The Las Vegas store was closed May 2009. Steve opened a small store in Boulder City, Nevada. John and his wife, Astrid, came to Pioche. They worked on the Pioche store, weekends and holidays, for three years refurbishing the store on Main St. Margaret, John's mother, owns a small home in Pioche and John and Astrid live in Caselton. Margaret goes to the Pioche shop several days a week when she is in town.

The Dougherty name has deep roots in the jewelry business and many small momentos from the original store can be seen in the Pioche shop. It's a friendly place to stop in to say hello and enjoy some refreshments. Business hours are: Tuesday through Friday 10 a.m.-5 p.m. and Saturday 10 a.m.-2 p.m.

THEN & NOW



One of the oldest continuously-operated businesses in Nevada is the Silver Cafe in Pioche. Originally opened 102 years ago, the building has seen several owners. The current owners are sisters Judy Kwiatkowski and Julie White.



RAINBOW CABLE

735 Main Street - Pioche, NV 89043

Cable TV for all Lincoln County

775-962-5111

COMMUNITY RESOURCES

Restaurants

Historic Silver Café(775) 962-5124
 Grub Pub(775) 962-5419

Lodging

Hutchings Motel(775) 962-5404
 Motherlode Motel(775) 962-5159
 Overland Hotel(775) 962-5895
 Sweet Life Guest Cottage(775) 962-5188
 Wright's Country Cabins (866) 810-7303

RV Parks

Eagle Valley RV Park (775) 962-5293
 Pioche RV Park (775) 962-5570
 Roll Inn RV Park(775) 962-5566

Transportation (getting here)

Major Highways

From Las Vegas I-15 northbound to U.S. 93 north
 From Ely U.S. 93 southbound
 From Salt Lake City to Cedar City I-15 south-
 bound
 To UT SR-56 to NV SR-319 to U.S. 93
 Lincoln County Airport(775) 728-4409
 Lighted, paved runway, 4800 feet long
 12 miles south in Panaca

Bus Service

Lincoln County Transportation..(775) 728-4477

Education

Pre-school/(775) 962-5832
 Elementary School K-6
 Junior High School(775) 728-4655
 Students bus to Panaca, 12 miles south
 High School(775) 728-4481
 Students bus to Panaca, 12 miles south

Utilities

Pioche Public Utility(775) 962-5840
 Solid Waste – NWS Crestline(775) 728-4333

County Government

Lincoln County Clerk(775) 962-5109

Taxes

Lincoln County Assessor(775) 962-5890

Police

Lincoln County Sheriff(775) 962-5151

Telephone

Lincoln County Telephone Co ... (775) 962-5131
 www.lctsys.com
 WUE Inc. (cell phone service) .. (775) 962-5161

Cable TV

Rainbow Cable(775) 962-5111

Internet

Lincoln County Telephone(775) 962-5131

Medical

Grover C. Dils Medical Center ..(775) 726-3171
 25 miles south in Caliente
 Caliente Clinic(775) 726-3121
 Steven Klomp, Dentist(775) 728-4432
 12 miles south in Panaca
 Lincoln County Ambulance911
 Shannon Kirches, Masseur(775) 728-4325
 Panaca
 Lincoln County Physical Therapy (775) 726-3117
 Caliente
 Meadow Valley Pharmacy(775) 726-3771
 Caliente

Churches

Berean Baptist(775) 962-5886
 Christ Church Episcopal(775) 962-5835
 Holy Child Catholic, Caliente ..(775) 726-3669
 LDS, Pioche Ward(775) 962-5469
 United Methodist Church, Caliente.(775) 726-3665

Newspaper

Lincoln County Record(775) 726-3333
 Caliente admin@lincolncountyrecord.com

Other Community Services

Pioche Senior Center(775) 962-5378
 (serves lunch daily)
 Pioche Chamber of Commerce ... (775) 962-5544
 www.piochenevada.com
 Lincoln County Chamber of Commerce
 www.lincolncountynevada.com
 Lincoln Links Golf(775) 962-5206
 Retired Senior & Volunteer Program (RSVP) Vol-
 unteers always welcome.(775) 726-3447
 VFW, Caliente(775) 726-3156

PIOCHE PROFILE

Pioche, population about 800, is the northern-most commu-
 nity in Lincoln County, located 175 miles north of Las Vegas on
 U.S. 93 at 5,500 to 6,200 foot elevation in the high desert of
 southeastern Nevada. It's relatively high elevation and location
 out of the rain shadow of the Sierra gives the town an invigor-
 ating 4-season climate. Average daily temperature:

- July average high, 89 degrees F.
- January average low, 21 degrees F.
- Annual rainfall average, 13.5 inches
- Annual snowfall average, 44 inches.

Much in contrast to its colorful past, today Pioche attracts
 new residents with its friendly, picturesque hometown appeal.
 Pioche is the Lincoln County seat; the courthouse is a promi-
 nent fixture of the town. With full amenities, Pioche offers good
 food, lodging, shopping, automotive and emergency services.
 The town's recreation center includes park and picnic facilities,
 a swimming pool and a baseball diamond. A 9-hole golf course,
 with artificial turf T-boxes and greens, is located 2 miles north
 of town at mile-marker 2 on SR322.

Pioche has two parks. The Mining "pocket" park is located
 at the upper end of Main Street, where the Business route from
 Highway 93 comes into town. It has a bandstand with a bench,
 overlooking a mine tunnel replica. The main town park is at the
 lower end of Main Street, by the new Courthouse. It has a base-
 ball field, large grassy play area, a large picnic shelter with
 cooking areas, and playground equipment. This is where the
 Labor Day celebration events are held, including the
 mining/drilling competitions. The town swimming pool is
 located on the other side of the baseball field, and is open only
 during summer months. The town's free R-V Park is located
 across the street from the swimming pool; six pull-through sites
 are available for short-term stays (less than one week). Water
 and sewer are available, no electricity, and a donation is
 requested for use. No restroom facilities are provided at this RV
 park. There are two commercial full-service RV parks for those
 wanting or requiring all the amenities, the Eagle Valley RV
 Park: 962-5293 Web site: www.EagleValleyNV.com

Roll Inn RV Park: 962-5566.

Overland Hotel & Saloon



662 Main Street Pioche, NV 89043

Themed Rooms, A/C & Free Wi-Fi

Slots - Video Poker - Dance Hall

Back Bar over 150 years old

www.overlandhotelnv.com
 overlandhotel@lcturbonet.com (email)

775-962-5895

JIM WILKIN TRUCKING LLC

Sand & Gravel Redi-Mix Concrete Construction

One Mile South of Intersection
 Hwy 93 & 319 on US Hwy 93

&

800 Antelope Canyon Road, Caliente, NV 89008

Serving Lincoln County Since 1972

jwtrucking@yahoo.com

775-726-3776